

MARCH 2025 Newsletter



AGM - WEDNESDAY 5TH MARCH

Location: Manukau Cruising Club, Orpheus Drive, Onehunga

Doors open: 6.30pm - Dinner available (from \$16)

President's Report



Hello from Sheryl

This is my last President's report for our branch newsletter. I am stepping back from committee tasks after our **upcoming AGM which is on Wednesday night, 5th March at the Manukau Cruising Club, starting at 7pm**. The bar will be open and meals will be available.

Front of mind for me is to get enough nominations to fill our committee positions. I will continue to manage and issue the Long Service Badges. I have learned of 4 nominations for general committee positions and 1 for Treasurer. That's a great start. However, the Executive roles need to be filled for us to continue as a branch. We cannot function, exist even, if we do not have these positions filled:

- PRESIDENT
- VICE PRESIDENT
- SECRETARY
- RIDES CO-ORDINATOR which is not an executive role but an important role. We need our RIC's and our rides calendar to continue. Afterall, we are a motorcycle group.
- WELFARE OFFICER – again, not an executive role, but one that we are needing to have more and more as our members become more "mature".

Please remember this is your branch. Nominations will be accepted from the floor on the night at the AGM. You need to be a financial member to attend the AGM. Bring

your membership card to present to the committee member at the door when you come in.

We have some members that have forgotten to renew their membership. Please get onto this A.S.A.P.. If you have not received a new Membership Card this might be the reason why. Please contact me or a committee member if you need further information.

Our raffle table was overflowing with contributions from members...thank you all. There were motorcycling items, in particular, a member no longer needed. These were appreciated as they disappeared from the raffle table quickly. If you have items that you no longer use or need and that are in 'good nick' and usable think about bringing them along to a branch night as a raffle prize. N.B. – we do not hold raffles at the AGM.

You will have received by now a separate notification of the passing of our colleague, Ian Methven.

Ian had been battling for months to come right after being hospitalised (Middlemore Hospital) in September 2024 with pancreatitis. After just over 4 months and having made some progress, he was transferred to a Rehabilitation facility in Pukekohe. More recently, he was transferred back to Middlemore after a chest infection took hold.

This will be upsetting news for many of us that knew Ian. Please stand by for further details regarding funeral arrangements.

I'd like to bring everyone's attention to the slight change in date this year for the North Island Remembrance Weekend held in Taupo. This year the date has changed to the third weekend in August, that's Friday 15th August to Sunday 17th August for those that do the 'long haul'. The ceremonial part of the weekend itself is on Saturday 16th August. Please check your accommodation booking dates if you have already made them and if not, for those that have not yet done so, get started.

WISDOM FROM THE WORKSHOP (contribution from Branch member)

Do you know the tyre pressures for your bike? Front....Rear?

There should be a label/plate somewhere on your bike (some older models may not) or in your handbook that will give you manufacturers recommended pressure for standard tyres as fitted on your bike when it was new.

Not only is it unsafe (referring to braking and handling here) if your pressures are incorrect but it will affect fuel consumption if pressure is low. If you are lucky enough to have your own compressor at home in your elaborate workshop, inflating your tyres is a relatively simple task. If, however, you must go to your local petrol station for air, would you remember what your tyre pressures should be? Would you be able to see the label if it is under your seat or if the writing is small? A couple of simple solutions to this are:

- Use a small paint pen and write what the pressures should be on a swing arm
- Or print a label from your label maker machine (if you have one)
- DON'T write them on the tyre

Invest in a tyre pressure gauge to compare petrol station gauges with yours when filling with their air as you cannot always rely on them to have been regularly calibrated.

Normally you would check tyre pressures when the tyres are cold. If you were to check your pressures after a ride, they will read higher than a cold pressure reading. There are devices now that will monitor your tyre pressures electronically and display a warning if tyres are losing pressure. Even more, newer bikes have this type of sensor already fitted.

Our monthly branch nights are held on the first Wednesday of each month **except January** at the Manukau Cruising Club, with people arriving from 6.30pm for the meeting start at 7.30pm. You are welcome to donate something to the raffle table. Perhaps you have a story or a bit of news you'd like to share...we'd love to hear it.

Happy riding
Sheryl Boyd
PRESIDENT
ULYSSES NZ - AUCKLAND BRANCH

**** EDITORS NOTE ****

A shorter newsletter this month I'm sorry, I have spent the last 2 weeks of February touring the Sth Island with 3 other Ulysses colleagues so little free time to work on any additional content.

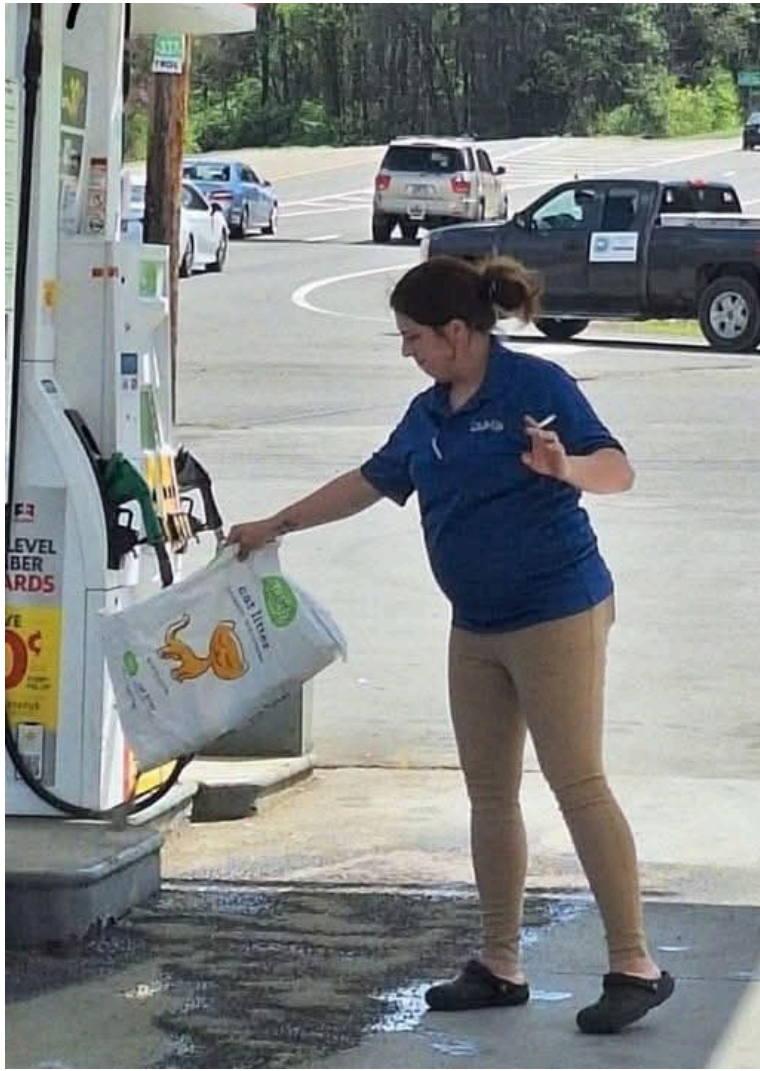
Next month we should have some good gossip and announcements from the AGM!

Ed

meanwhile....

Every day I tell myself, John you need to quit drinking.
Lucky for me my name is not John.







NOTICE OF AGM

Ulysses club of NZ Inc, Auckland branch

36th AGM agenda (FOR FINANCIAL YEAR 2024).

Location: The Manukau Cruising Club, Orpheus Drive, Onehunga, Auckland
Date: Wednesday 5th March 2025
Time: 7:00 pm

1. Welcome and Introductory Comments – Sheryl Boyd
2. Attendees and apologies - Sheryl
3. Minutes of 35th Branch AGM held on 3rd March 2024 – Sheryl
4. President’s Report – Sheryl
5. Treasurer’s Report – Evan Swenson
6. Runs Co-ordinator Report – Chris Moller
7. Social Events Report – Peggy O’Neal
8. General business and remits - Sheryl
9. Election of Officers and Committee Members – Terry Brown
(Nominations close 5th Feb 2025, nomination form follows)

President
 Vice President
 Treasurer
 Secretary
 Runs Co – Ordinator
 Committee

10. 2025/2026 Presidents acceptance speech
11. Next (37th) Auckland Branch AGM date and time - President
Location: The Manukau Cruising Club, Orpheus Drive, Onehunga, Auckland
Date: March 2024
Time: 7:00pm

Note: All Apologies, Remits / items for General Business and Officers and Committee completed Nomination forms -
 Please email to: Auckland.sec@ulysses.org.nz
 or mail to Secretary, **6 Jackies Place Pukekohe Auckland.**

[Nomination Form for Ulysses Club of NZ Incorporated](#)
[Auckland Branch Committee Positions 2025/26](#)

Name: _____	Ulysses Number: _____
Position nominated for: _____	

Nominator: _____	Ulysses Number: _____
Secoded: _____	Ulysses Number: _____
Nominees Consent Signature: _____	
Date: _____	

DID YOU HEAR THERE'S BEEN A BIG CHANGE OVER AT ULYSSES?!

**OVER 18 & LIKE MOTORCYCLES?
JOIN THE ULYSSES CLUB!**

With branches all over Aotearoa NZ, you are never far from other motorbike riders of all ages - no matter what brand you ride (or even if you don't ride).

Our branches organise social events, group rides, fundraising events, training and more!
Join us and you'll see that there's lots to do and fun to have - for beginners and more experienced riders alike.

To join, head to our website or email the Club administrator admin@ulysses.org.nz and join over 2500 members who are out riding and having a great time!

www.ulysses.org.nz




PHOTO: MANAWATU BRANCH

ULYSSES CLUB MERCHANDISE

Show your club pride with some of our Ulysses branded merchandise. Decals, Patches, Clothing and Badges all available online.

Click this link to purchase online: The Ulysses Club of NZ | Club Store

MEMBERS DISCOUNTS AVAILABLE

There have been changes to the Interislander and Bluebridge discounts.

[Click here for the new details.](#)

Re the Interislander please note if you are a senior tick the seniors box and enter the discount code. You will get discount on the seniors

price. Also the Interislander on occasions has discount promotions. There is currently one for twenty percent but subject to conditions. [Click here for details](#). Note you cannot use two discount codes at the same time.

KIWI FUEL LTD current Ulysses card 0800 438383 or info@kiwifuelcards.co.nz

Motorcycle Doctors 10% discount for Ulysses members to use at the online store www.shop.motorcycle-doctors.co.nz. Enter "Ulysses" as the discount code at checkout.

For further discounts click on the link above

Are you a financial member?

There are still some people who have not renewed their membership yet. If you think this might be you please go and get out your Membership Card.

- Check the expiry date. If your membership expired last year, it is still not too late to renew your membership.
- Go online now and pay your sub.

One Year Individual Member is \$70.00,

Three Years Individual Member is \$190.00

One Year Joint Member is \$66.00 per each member

Three Years Joint Member is \$180.00 per each member.

Pay money into:

BNZ Bank A/c: 02-0412-0001771-097.

DON'T FORGET TO INCLUDE YOU NAME AND ULYSSES # IN THE DETAILS

Job done thanks.

RUNS AND SOCIAL EVENTS CALENDAR

When attending a Club Ride be at the departure point 10 Minutes early with a FULL GASTANK and an EMPTY BLADDER. If you are not sure if the run may be cancelled because of inclement weather, phone the RIC.

RIDE GUIDE

SHORT:150Km's, MEDIUM: 150 - 300Km's, LONG: 300+Km's. XTRA/LONG:500+Km's
Each RIC will carry a Mobile Phone for emergencies. In an emergency use the number listed next to the relevant RIC. If no answer leave a message.

- The Rider in Charge will be organising the day. Contact them for details. All Riders participating in a Ulysses Club Ride are expected to hold a current licence, relevant to the motorcycle that they are riding, wear suitable clothing and have a registered and warranted road-worthy motorcycle.
- Club & Social Night Venues are printed at the bottom of the Runs List. Direct ride related questions to Chris Moller (Runs Co-ordinator) 09 298 1702 or RIC of the day. General questions to Sheryl Boyd (President) 021 675 328 .

Tue- 4th Mar

TUESDAY EASY RIDERS

Pick your R.I.C.and Destination on the day.

For more info contact Dave Tantrum 021 901 274

Departs Papakura Service Centre 10-00am

Wed- 5th Mar

CLUB NIGHT, CRUISING CLUB. AGM NIGHT.

Sat- 8th Mar

LITTLES NEWBIES & OLDIES

SHORT

Nathan is RIC - Phone or 0274633442

Anyone

Departs Papakura Service Centre 10-00am

Sun- 9th Mar FISH AND CHIPS WITH CHRIS

Chris is RIC - Phone 021 034 7996 or 021 034 7996 Anyone
Departs Bombay Z 10-00am

Tue- 11th Mar TUESDAY EASY RIDERS

Pick your R.I.C.and Destination on the day.
For more info contact Dave Tantrum 021 901 274
Departs Papakura Service Centre 10-00am

Thu- 13th Mar WEST AUCKLAND DINNER & SOCIAL NIGHT

Sat- 15th Mar COFFEE, CAKES AND CONVERSATION - SOUTH
KARAKA GENERAL STORE & CAFÉ. [257 LINWOOD ROAD](#)
[KARAKA](#).

Meet at 10:00am for a coffee and chat, choose your own
departure time.
[257 Linwood rd, Karaka](#).

Tue- 18th Mar TUESDAY EASY RIDERS

Pick your R.I.C.and Destination on the day.
For more info contact Dave Tantrum 021 901 274
Departs Papakura Service Centre 10-00am

Sat- 22nd Mar LITTLES NEWBIES & OLDIES *SHORT*

Nathan is RIC - Phone or 0274633442 Anyone
Departs Papakura Service Centre 10-00am

Sun- 23rd Mar WHANGAMATA WITH DAVE POTTER *MEDIUM*

Dave is RIC - Phone 021 148 6831 or 021-148-6831 Anyone
Departs Bombay Z 10-00am

Tue- 25th Mar TUESDAY EASY RIDERS

Pick your R.I.C.and Destination on the day.
For more info contact Dave Tantrum 021 901 274
Departs Papakura Service Centre 10-00am

Thu- 27th Mar SOUTH AUCKLAND DINNER & SOCIAL NIGHT

Papakura Club, [5 Croskery Rd](#), off Hunua Rd.
Contact Chris 092891702 or 0210347996.

Tue- 1st Apr TUESDAY EASY RIDERS

Pick your R.I.C.and Destination on the day.
For more info contact Dave Tantrum 021 901 274
Departs Papakura Service Centre 10-00am

Wed- 2nd Apr CLUB NIGHT, CRUISING CLUB

Sun- 6th Apr NORTH WAIKATO WITH TONY *MEDIUM*

Tony is RIC - Phone 020 4148 5160 or 020-414-85160 Anyone
Departs Bombay Z 10-00am

Tue- 8th Apr TUESDAY EASY RIDERS

Pick your R.I.C.and Destination on the day.
For more info contact Dave Tantrum 021 901 274
Departs Papakura Service Centre 10-00am

Thu- 10th Apr WEST AUCKLAND DINNER & SOCIAL NIGHT

Sat- 12th Apr LITTLES NEWBIES & OLDIES *SHORT*

Nathan is RIC - Phone or 0274633442
Departs Papakura Service Centre 10-00am

Tue- 15th Apr TUESDAY EASY RIDERS

Pick your R.I.C.and Destination on the day.
For more info contact Dave Tantrum 021 901 274
Departs Papakura Service Centre 10-00am

Sat- 19th Apr COFFEE, CAKES AND CONVERSATION - EAST

Back to Lime Tree Café
Meet at 10:00am for a coffee and chat, choose your own
departure time.
Lime Tree Café. Whitford

Sun- 20th Apr DO YOUR OWN RIDE EASTER WEEKEND

PICK YOUR RIC ON THE DAY Anyone
Departs Bombay Z 10-00am

Tue- 22nd Apr TUESDAY EASY RIDERS

Pick your R.I.C.and Destination on the day.

For more info contact Dave Tantrum 021 901 274
Departs Papakura Service Centre 10-00am

Thu- 24th Apr SOUTH AUCKLAND DINNER & SOCIAL NIGHT

Papakura Club, [5 Croskery Rd](#), off Hunua Rd.
Contact Chris 092891702 or 0210347996.

Sat- 26th Apr LITTLES NEWBIES & OLDIES *SHORT*

Nathan is RIC - Phone or 0274633442
Departs Papakura Service Centre 10-00am

Sun- 27th Apr HOPIN STOPIN CAFÉ WITH VANCE *MEDIUM*

Vance is RIC - Phone 09 278 7229 or 021 023 83498

Anyone

Departs Bombay Z 10-00am

Tue- 29th Apr TUESDAY EASY RIDERS

Pick your R.I.C. and Destination on the day.
For more info contact Dave Tantrum 021 901 274
Departs Papakura Service Centre 10-00am

Tue- 6th May TUESDAY EASY RIDERS

Pick your R.I.C. and Destination on the day.
For more info contact Dave Tantrum 021 901 274
Departs Papakura Service Centre 10-00am

Wed- 7th May CLUB NIGHT, CRUISING CLUB

CLUB NIGHT MEETING AND SOCIAL EVENING. Starts at approx. 6-30pm. Dinner, Tea & Coffee is available at the venues, Name badges must be worn (\$1 fine for non-conformance..). Visitors Welcome.

Venue; Manukau Cruising Club. Orpheus Pl, Onehunga. 1st Wednesday of each month.

WEST AUCKLAND SOCIAL EVENING; Venue -New Lynn RSA. [2 Veronica St](#), New

SOUTH AUCKLAND SOCIAL EVENING; Venue - RSA Papakura, Elliott Street, Papakura

Committee Meetings are held at 7:00pm on the third Monday of each month at The Manukau Cruising Club, Orpheus Road, Onehunga

"After Match Function" means an organized group ride returning back to a venue.

Rally Entry Forms etc. are available on Club Nights.

**AUCKLAND ULYSSES POSTAL ADDRESS;
PO Box 96 219, Balmoral, AUCKLAND 1342.**



THINGS CAN CHANGE BETWEEN NEWSLETTERS!

Check before departing on a club ride

To keep up-to-date with Branch events, runs and news between newsletters

visit our website for the latest information www.ulyssesauckland.org.nz

We also have a face book page.

Join the [Auckland Ulysses Facebook](#) page. You will find notices of upcoming events, ride reports immediately after (or during!) rides, ride cancellations, and much more.

JUST A REMINDER - RAFFLE DONATIONS

It's not just the committee's job find to find the raffle prizes at the monthly meetings - it's up to all members. The raffles (and the modest run fees) form a vital part of our Branch's income.

- Idea 1: if it's **your birthday** in a particular month please donate a bottle of wine or something else of similar value.
- Idea 2: consider donating any unwanted Christmas - or birthday - gifts as a raffle prize. That way it will still bring joy to someone.
- A BIG THANK YOU TO ALL THOSE WHO HAVE BEEN HELPING OUT WITH THE RAFFLES!

BUSINESSES WHO SUPPORT AUCKLAND ULYSSES

ULYSSES MEMBERS' DISCOUNT

There are a range of businesses throughout New Zealand that recognise the value of the Ulysses Membership. Note that to obtain the discount you will need to produce your current club membership card.

CLUB DISCOUNTS 2024

1. Interislander and 2. BLUEBRIDGE [Click Here](#)
3. VTNZ current Ulysses card 31 Dec 2024
4. KIWI FUEL LTD current Ulysses card 0800 438383 or info@kiwifuelcards.co.nz
5. KIWI MOTORCYCLES current Ulysses card Christchurch
6. APEX AUTO CENTRE HAM current Ulysses card
7. TREVOR PIERCE YAMAHA CHCH current Ulysses card
8. BUTT BUFFER WHANGANUI current Ulysses card
9. EZIBED NZ "ULY10" current Ulysses card
10. FRANKTON LAW current Ulysses card
11. ASURE ACCOMM GROUP Join Azure Group
12. TOP TEN MOTOR CAMPS Join Top Ten Group

MEMBERS' FREE ADS

<p>QUARTERSAWN Custom Wood Creations We are experienced craftsman that will create your custom piece to your requirements. Furniture, cabinetry, library, doors any wood project. For examples click on quartersawn Phone Aaron 027 228 9724 email aaron@quartersawn.co.nz Paul B #8082</p>	<p><i>These adverts are for Ulysses Auckland members only and are free of charge. Email the Editor. Support your fellow members.</i></p>

BUSINESSES WE LIKE

LIFESTYLE IMPORTS: For all your motorcycle gear and clothing. Shop online at www.lifestyle-imports.co.nz They have now set up shop at 13 Queen Street Waiuku. Call Florence at 027 262 5287 for opening hours.

CAFES:

Waiomu Beach Cafe - 622 Thames Coast Road. Great coffee and food. Good parking just across the road.

Native Tree Cafe - 7 Church St, Mangatarata (on SH27 about 200 meters south of intersection with SH2). Great food & coffee. Sheltered outdoor seating. Excellent parking off main highway.

Coach Cafe & Takeaways - 37 Seddon Street, Raetihi An excellent stop in the central North Island.

CLUBS:

Manukau Cruising Club offer memberships to **Over 65's for \$6 and \$30 per year for everyone else. A great opportunity to have a spot for a few drinks with friends or to join in with their great entertainments!**

Parnell Returned Services Club - 139 Parnell Road, Parnell

We welcome anyone from Ulysses to pop in and enjoy a beer at a reasonable price.

We don't have pokies or TAB – but we do have pool tables, dart boards, and a juke box.

We are surrounded by some of the best eating places in Auckland including pizza at La Porchetta, local Indian etc - bring the takeaways back to the club - they are virtually next door.

Guests will need to sign the visitors' book, but please consider membership at \$30 per calendar year. (This will give reciprocal rights with clubs all over NZ:

see <https://clubsnz.org.nz/>) There is a bike parking space across the road next door to the Windsor. Generally we are open 2pm to at least 9pm daily.

Please send details of any businesses that treat Ulysses members well to the editor for future inclusion in this list.



ULYSSES

AUCKLAND BRANCH

**Join other Motorcycle Enthusiasts.
Enjoy riding our country roads.
Socialize over lunch at many great cafes**

*** Several rides every month * Rallies
* Weekends away * Dinners and Social Events**

For more information go to our website:
www.ulyssesauckland.org.nz

AUCKLAND BRANCH OFFICERS & COMMITTEE

Office holders

President Sheryl Boyd #9443 021675328 auckland@ulysses.org.nz
 Treasurer Evan Swenson #803 027 2370860 ewswb@xtra.co.nz
 Secretary Roger Judd #9372 021 844040 auckland.sec@ulysses.org.nz

Committee members

Chris Moller #5401 0210347996 mollerz@xtra.co.nz
 Peggy O'Neal #2849 021523976 peggyulysses@hotmail.co.nz
 Doug Biene #8665 027 8741912 dbene41@gmail.com
 Mark Benton #8668 027 836 166 mark_roch@hotmail.com
 Janny Nicoll #9471 021 070 0994 jannynicoll@gmail.com

Other roles

Runs Coordinator Chris Moller 0210347996 #5401 mollerz@xtra.co.nz
 Sheriff Clive Thomas 0274812700 #2383 clv6pat@gmail.com
 Webmaster Charlie Truell 0223459309 #8956 charlietruell@gmail.com
 Newsletter Editor Roger Judd 021 844040 #9372 ulyakld.editor@gmail.com
 Facebook Admin Adrienne Dodge 0211655349 #9247 ajdodge@xtra.co.nz

ABOUT THE NEWSLETTER

The newsletter is freely available to any non-members who wishes to subscribe. Members receive it automatically.
 Feel free to forward this on to anyone who may be interested. To subscribe email the editor.

The newsletter is distributed by email on or about the Saturday prior to the monthly meeting. Eleven monthly issues are produced, January being the missing month.

If a printed copy is required the annual subscription will be \$30. Printed newsletter is available for pick-up at the monthly social night at the Manukau Cruising Club. Copies not picked up by hand may be mailed out.

The editor encourages right of reply, correspondence, criticism, and suggestions.
Address newsletter correspondence to: The Editor: ulyakld.editor@gmail.com

AUCKLAND ULYSSES POSTAL ADDRESS;
PO Box 96219, Dominion Road,
AUCKLAND 1446.
Web site: www.ulyssesauckland.org.nz