



**FEBRUARY 2025 Newsletter**



**MONTHLY MEETING - WEDNESDAY 5TH FEBRUARY**

Location: Manukau Cruising Club, Orpheus Drive, Onehunga

Doors open: 6.30pm - Dinner available (from \$16) - raffles (meat packs and other goods) - catch up other members and friends.



**President's Report**



**Hello from Sheryl**

I hope we all had an enjoyable Christmas and New Years time whether we were taking some time out or working through. It wasn't that long ago but for some that just had Stat days off, like yours truly, it is now just a memory.....awwww.

**Newsflash:** We're getting back into the swing of things with our first branch social night on Wednesday 5 th February. See you there

Facebook is an amazing way to keep in touch with happenings out there. For those of us that do not use Facebook or have internet, however, it is not much use. On that subject, I am sharing some sad news that we had recently lost a couple of Ulyssian colleagues.

Here are Facebook posts regarding this:

*"It's with great sadness that I have to inform you all of the tragic events that happened today on the return trip from today's ride. Mac Macaulay has been involved in a motor vehicle accident and has passed away as a result of this.*

*We have lost a staunch member of our Ulysses family and a friend to many in the branch and also other branches around the country and clubs in the Bay. He will be remembered for his dedication to the role of Branch president and also to the Committee.*

*A person who took me under his wing when I joined the club and helped me immensely and for that I will be forever grateful.*

*My heart goes out to his family and friends and also to the branch members who were on the ride today, we are here for you all and will wrap you in support and love. I will update everyone when I have more information.*

*Tony Hickmott  
Hawkes Bay branch president  
#10416"*

*"It is sad news I have to inform you all Arthur Davies Ulysses member 5844 passed away last night. Arthur was a founding member of the Ulysses A Drill Team and it is his photo that is on the front of the Auckland Ulysses Facebook page.*

*As I have lost touch with many of the members of the Drill Team over the years can you please inform all who were involved in the team as we were all an extremely close group.*

*Trevor Birchall Ulysses # 4060"*

Then there is the good news we can catch up on:

We have some good news to share with you.

Ian Methven from Auckland branch, after having spent 4 months in Middlemore Hospital, has made some progress....enough to enable him to be moved to the Rehabilitation Ward at Pukekohe Hospital!! What a great start to 2025

Well done Ian, his family and his supporters

Sheryl Boyd, Ulysses Auckland, # 9443

**ALSO FROM FACEBOOK:**

Some images from 1 st January 2025 at the Milky Bar Ride:





Lady President downsizing in cc's, just for the day, at the Kumeu Classic Car & Hot Rod





#### **NATIONAL BIKE RAFFLE**

Yes, it's all on and our branch has plenty of tickets for you to purchase. There are 5 tickets to a book, the tickets are \$10 each. Approach Chris Moller or myself if you want some. Cash please.

#### **MEMBERSHIP RENEWAL**

We have some members that have forgotten to renew their membership. Please get onto this A.S.A.P.. We want you to stay with us. If you're not sure whether you have renewed your membership contact me and I'll check to see if you're on the 'good' or 'naughty' list.

#### **BRANCH AGM**

Our AGM will be held at the Manukau Cruising Club on Wednesday 5 th March. The time and place remain the same as advertised previously. Closing date for nominations is Wednesday 5 th February. I am disappointed to learn that to date we have only one nomination for a Committee role. Our branch needs a President, Vice President and Secretary in the Executive roles. We also need Committee members and a Welfare Officer. We would rather see the positions over subscribed rather than having empty vacancies.

Please remember this is your branch. This is your chance to contribute, to make a difference and assist. As a committee member you'll help direct your branch and make a tangible difference in its future. I can say, as in my case, no experience required....guidance and encouragement will be given

#### **WISDOM FROM THE WORKSHOP**

- Before you wash your bike - Look for leaks. Streaks of oil and dirt down fork lowers suggest failed fork seals.
- Drips under the bike must be investigated. Is that coolant? Oil? Fuel? Give it a sniff, then backtrack the source. If it's been leaking for a while, you may have to de-gunk your bike's nether regions to zero in on the origin.
- How is your battery? Has it been good or have you had to give it a boost once or twice? It may be worth having the system checked for charge rate, current leakage or just failing battery.
- Do you have a battery maintainer to trickle charge the battery when not in use?
- If you are going to invest in a new battery & you don't have a maintainer now is the time to consider one, the wiring is easier to fit when the battery is being replaced and your new battery will last longer.



**BRANCH NIGHTS**

Our branch nights are held on the first Wednesday of each month except January at the Manukau Cruising Club, with people arriving from 6.30pm for the meeting start at 7.30pm. You are welcome to donate something to the raffle table. Perhaps you have a story or a bit of news you'd like to share...we'd love to hear it.

*Happy riding*



*Sheryl Boyd*

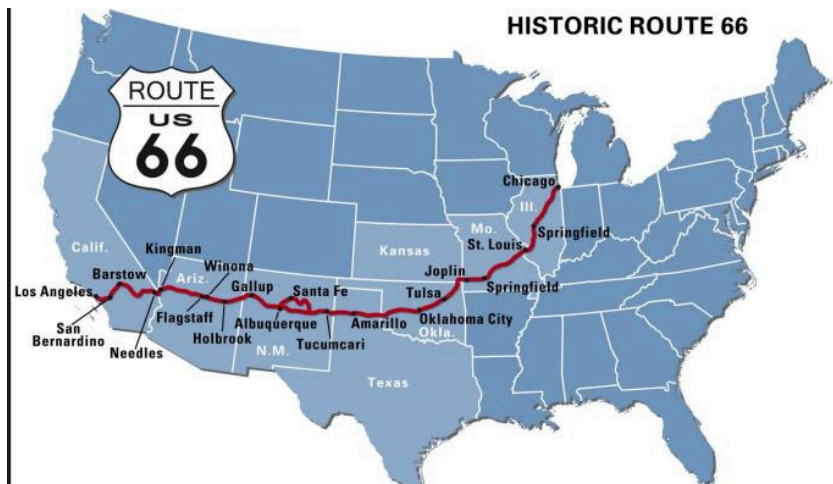
**PRESIDENT**

**ULYSSES NZ - AUCKLAND BRANCH**

**Member #9443 Mob: 021 675-328 Email: [auckland@ulysses.org.nz](mailto:auckland@ulysses.org.nz)**

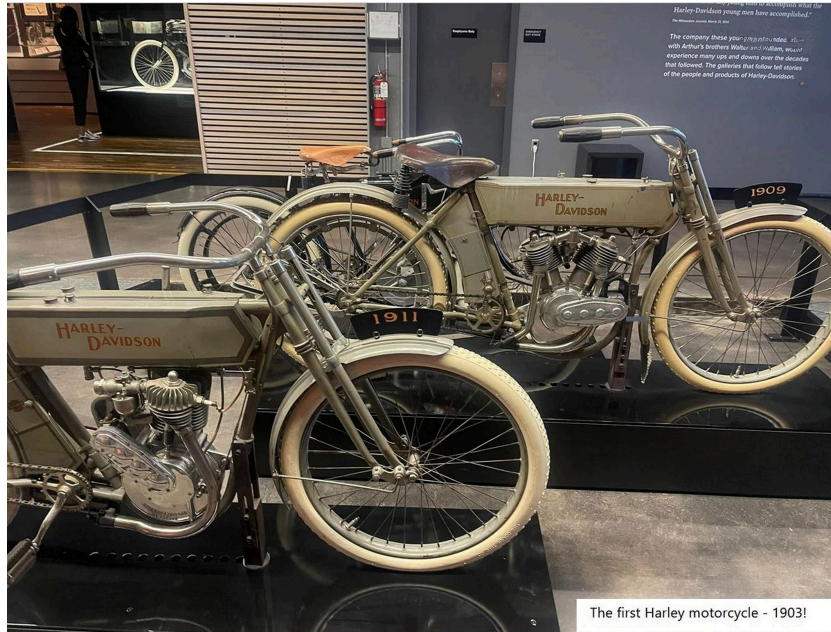
**Peter's Naylors USA Trip October 2024 - by Peter Naylor Auckland**

My Kiwi mate who now lives in South Africa was going to a Snap-on tool Conference in Orlando Florida and suggested that this was an opportunity for us to have a catch up and ride motorcycles on Route 66. We organised and hired our bikes through Will Sakowski - Ride Free Motorcycle tours USA. I joined my mate Neill and his German partner in Orlando. While they were at the conference, I did other things such as visit the Kennedy space centre and Legoland, we all went to Disney Springs for some entertainment and meals, the Titanic Museum was pretty good. The three of us flew down to Florida Keys which is a vibrant party area, we hired a couple of scooters for a day of exploring, that was fun, we toured around American style , tee shirts, no helmets , we got reprimanded by the law for parking them on the pathway. (he was not interested in our explanation).

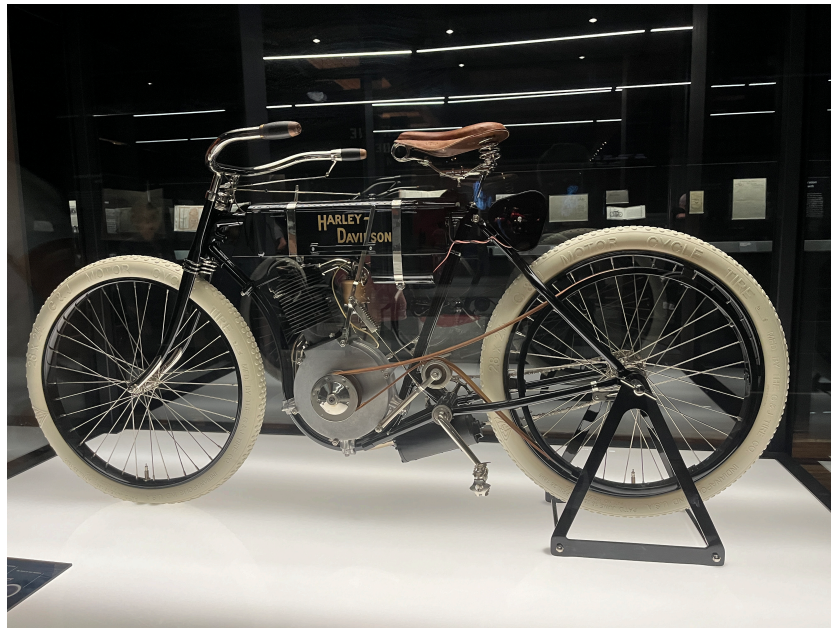


We flew to Milwaukee to pick up our Harleys, (self-drive tour) the beginning of an amazing adventure. The bike pick up was 17 miles from The Iron Horse hotel where we were staying, the rental company had programmed the GPS for another Iron Horse hotel 80

miles away, not the one we were staying at and in the wrong direction, after 45 miles of riding we finally woke up. We headed for the Harley Museum in Chicago as our hotel wasn't too far from it, we arrived at the museum and spent some time there before heading to our hotel. The museum staff were great, and they organised free entry for us the next day, it is truly an amazing motorcycle museum, a must see if you love motorcycles.



The first Harley motorcycle - 1903!

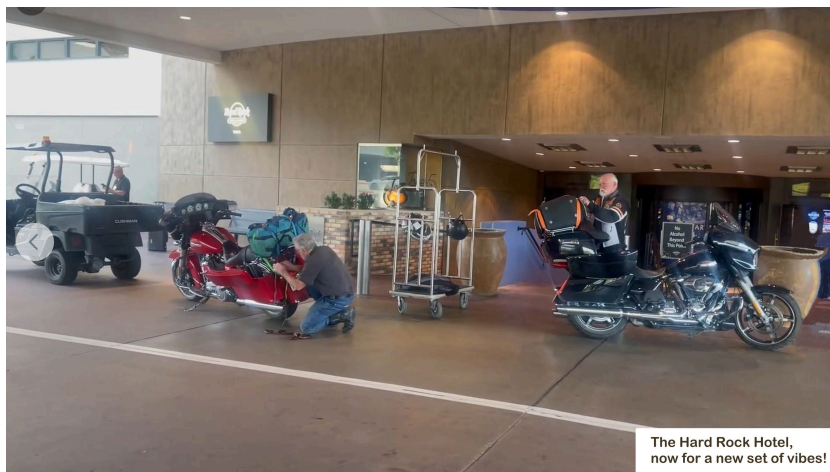


Neill and his partner had a Harley Road Glide Touring edition and mine was a Street Glide. We travelled from Milwaukee to Albuquerque, a distance of 2086 miles (3357 Kms). Unfortunately, my friends were time restricted due to business commitments and currency differences (the SA rand was 20 Rand to 1 USD). We spent 12 days on the Harleys with an average temperature of 40 deg C, max temperature 46 deg C+. Fuel is cheap at a cost of 80c us per litre (\$1.42 NZ approx.) The colour code is the opposite for fuel and diesel than we are used to, Neill filled his bike with diesel, so we had a bit of drama getting it all out of the tank and getting the bike to start again. Ride Free gave us all the GPS coordinates for our trip but for some reason we could not get them programmed into the bikes GPS as a 'trip' so each day we just put in that particular day's info with the exception of no Highways. This is where the trip became interesting and required some odd riding to get to the parts that were by-passed, the GPS would take us miles out of our way. Metal roads were common, and we ended up in many places totally lost but meeting some amazing people and were treated with great hospitality and history that we would never have experienced on an organized trip. It wasn't easy riding big bikes on dusty metal roads for hours on end in 40.C + heat with no wind. A saviour for us all was Sig Fallenhaug gave me a Harley



cooler bag with 2 one Liter bottles in it which I religiously filled up with ice each day, without those I don't think we would have made it. Our highest temperature was (115F) 46 deg C, Neill stripped down to a T Shirt and trousers, no helmet gloves that day and suffered from sunburn even though plenty of sun lotion was used. I kept my summer riding jacket on, I roasted but wasn't burnt.

At one stage the heat got to me as I remember looking at my speedo, 70 mph and next moment the bike was shaking, I had fallen asleep and veered to the edge of the concrete road and it was sheer luck and speed that got me back onto the road, a wakeup call. On some days, our rides were long because we were lost again, after that we stopped more regularly for hydration.



The Hard Rock Hotel, now for a new set of vibes!



So many places to see on the route! This is at Johnnie's in El Reno, we stopped here for some delicious Tacos

In Texas we got lost big time, the GPS showed the metal road we were on linking up to what we thought was a main Hwy, the metal road turned from a surface like what we have in NZ to a very coarse rock which gradually got bigger and wasn't easy to ride on. We stopped and re-programmed the GPS and it seemed if we continued in the same direction all would be well. We were miles from anywhere, the rock changed to sand and the sand became exceptionally fine powder and deep which lead to disaster as I was the first to come to grief and laid the bike down gently pinning my leg under it. Neill and Karola kept going, a lot of concentration was being had and they hadn't noticed my demise. They were another Km further down the road at the intersection we were looking for only to discover it was another metal road. Neill parked his bike up and started jogging back in my direction, by the time he arrived I had dug my way out and was standing up with the sole of my boot almost completely off. Getting the bike back up was a mission, we decided to turn the bike around as it was a no brainer to continue on. Turning a large bike around in 150mm of fine powdery sand was another challenging task even with the two of us. Neill went back and collected his bike as I waited, we were all under way again when Neill and Karola went down, I can't say, but it made me feel a bit better knowing I wasn't the only person to lose



control. Only our pride was hurt although Karola made it very clear to Neill that he should have taken her advice and turned around an hour or so earlier and she wasn't hopping on the bike until we were back on firm ground. We rode past her and roasted in the sun until she finally reached us. We of course were running out of time at this stage and needed to get onto the Hwy to make up lost time and so missed a couple of stops out that day. The traffic was cruising at 90mph (145.kph) which suited us, it was intimidating when large trucks or tankers would blast past us doing more than a 100mph (160.kph).

Route 66 is about nostalgia as you are looking at the past, lots of retro cafes, pubs, petrol stations, old vehicles, there's literary miles and miles of old vehicles scattered around the countryside as you travel through. Everything is on a large scale, some of the cafes were really cool with amazing atmosphere and people, the museums were full of amazing stuff. It was easy to go back in time, even the music got you caught up in the moment. It will be much better in 2026 as its their centennial year and a lot of money is being spent to restore stuff and make it an even bigger tourist attraction than it is now.

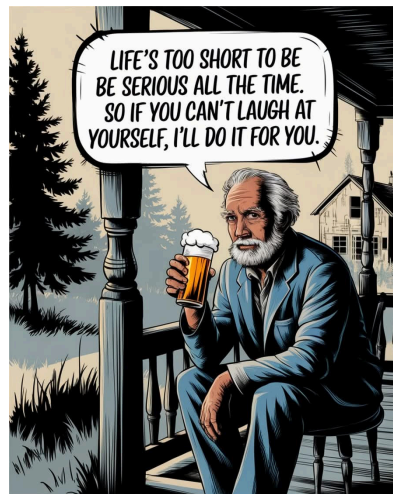
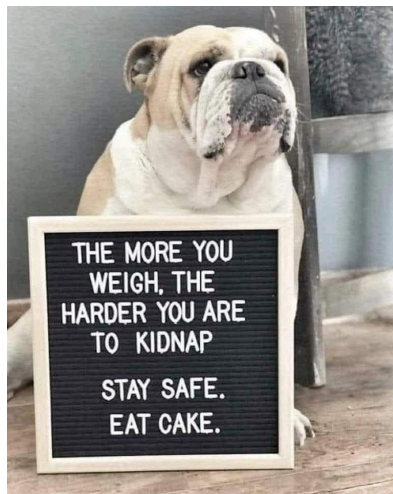
In America, the food portions were huge, one night we got just one hamburger and that feed the 3 of us! Everything has heaps of sugar, sauce, syrup on it, coffee like we know it is hard to get. Most Americans we met were very friendly and helpful, the roads were amazing, and I quite liked their traffic rules.

America is so big, there is much to see, talking to other US bikers there are many other riding adventures to be had, time of the year is important, riding in the heat is not a sensible thing to do, my excuse is age related, I just have to do it when I can.

Ride Free Motorcycle Hire did a good job and helped plan our trip. The variety and quality of the accommodation was excellent, there was no issues with the bikes.

I enjoyed the trip, the nostalgia, but for me it was mostly about catching up with a friend and riding motorcycles.

**Peter Naylor.**



## Ulysses Auckland – Financial overview and explanation - from the Committee

Ulysses Auckland has, over a long period of time, been able to put itself into a good financial position that benefits all our members.

### So, where does our money come from?

Let's start off by saying where it **doesn't come from** - your Ulysses membership fees.

**All** membership fees go to Ulysses National Committee not to your local Branch. From time-to-time NATCOM will financially assist with events although the host Branch carries the "Lions share"

As Ulysses Auckland we raise money by:

- Rides money – the \$2.00 that members contribute / donate by attending club rides.
- The Club night raffles and Fines levied by the Sheriff. 😊
- Interest from our Club savings.

Unfortunately, the growth of our participating Club members is quite slow. This has a negative impact on our ability to raise funds.

On the other side of the coin.... **what do we spend our money on?**

- Badges and awards such as Long service
- Remembrance weekend – including embroidered cloth badges, metal badges, venue, refreshments etc
- Bereavement and condolences
- Welfare of members
- Event attendance – Auckland Motorcycle Show stand (shared with NHB)
- Auckland Rally - top up if required which it hasn't in past years
- Social nights – if we are left short at an event
- AGM & Presidents travel
- Bank fees and postage and printing costs
- Website annual registration fees and maintenance of the site
- Raffle prizes

All Club events hosted by Ulysses Auckland we financially underwrite. This means if the event loses money the Club makes-up the shortfall.

For example: if we book a cinema for a social event, we pay a minimum of \$1000 for the venue hire.

We sell tickets at \$25 a head – if only 32 people attend = \$800 the Club makes up the \$200 to cover the \$1000 venue hire.

Therefore, your committee must be prudent in what it spends Club money on and tries to maintain a healthy “nest egg” that can benefit present and future members

## “MOTORCYCLES OF SIGNIFICANCE”

### The Honda Cub - “*You meet the nicest people on a Honda*”

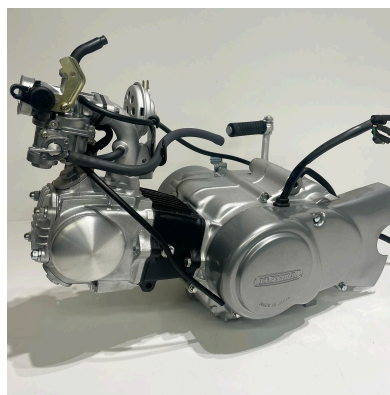
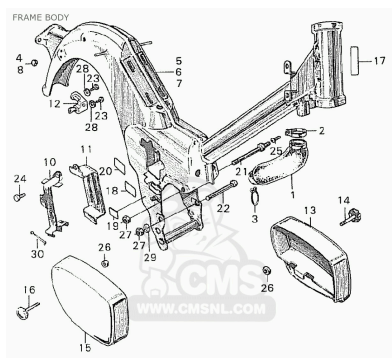
*Compiled from various articles off the net to provide a condensed story -- from the Editor*



**1958 Honda Cub - Model C100**

Honda's 50 cc C100 Super Cub (the first 50cc model was called a C100) is the biggest selling motor vehicle in history, having racked up 100 million sales in the last 66 years, and is still being produced in a 125cc form. The idea was conceived in 1956 by Soichiro Honda (the engineering brain with a racing interest) and Takeo Fujisawa (the financial and business skills). These two visited Germany motorcycle manufacturers in 1956 and decided the type of designs on the market at that time had no future. Their concept was a two-wheeler for everyone that could be sold and maintained in both developed and developing countries. The new motorcycle had to be technologically simple to survive in locations where poor road conditions and limited support existed. Common customer complaints of motorcycles of the time included noise, smell (2 stroke), poor reliability (especially electrics) and general difficulty to use and maintain, had to be designed out. A 'scooter' type nearly fitted the bill but was too complex for developing countries and the small wheels didn't suit

poor to non-existent roads. One interesting requirement was that it could be ridden with one hand while carrying a tray of noodles, Fujisawa saying to Honda *"If you can design a small motorcycle, say 50 cc with a cover to hide the engine and hoses and wires inside, I can sell it. I don't know how many [soba](#) noodle shops there are in Japan, but I bet you that every shop will want one for deliveries."* The design had to be sorted out before production began because it would be too costly to fix problems in the vast numbers that were envisaged were going to be manufactured.



The Honda Cub as introduced to the market in 1958 was the first motorcycle to use a plastic fairing which contributed to its low cost to build along with its pressed steel frame which vastly reduced man hours required to manufacture and assemble the motorcycle. The original pushrod overhead valve (OHV) air-cooled four-stroke single cylinder engine displaced 49cc and could produce 3.4 kilowatts (4.5 hp) at 9,500 rpm, for maximum speed of 69 km/h (43 mph), under favourable conditions. The low compression ratio meant the engine could consume inexpensive and commonly available low octane fuel as well as minimizing the effort to kick start the engine, making the extra weight and expense of an electric starter unnecessary.

The sequential-shifting three and later four-speed gearbox was manually shifted, but clutchless, without the need for a clutch lever control, using instead a centrifugal clutch along with a plate clutch slaved to the foot-shift lever to engage and disengage the gearbox from the engine. While not intuitive to learn, once the rider got used to it, the semi-automatic transmission, "took the terror out of motorcycling" for novice riders. Unlike many scooters CVTs, the centrifugal clutch made it possible to push start the Super Cub, a useful advantage if the need arose.

The early Super Cubs used a 6 volt ignition magneto mounted on the flywheel, with a battery to help maintain power to the lights, while later ones were upgraded to capacitor discharge ignition (CDI) systems. The lubrication system did not use an oil pump or oil filter, but was a primitive splash-fed system for both the crankcase and gearbox, with a non-consumable screen strainer to collect debris in the engine oil, this made the engine simple for servicing. Both the front and rear brakes were drums. On both the front and rear wheels were 2.25" x 17" wire spoke wheels, with full-width hubs.

Specific elements of the Super Cub's design were integral to the campaign, such as the enclosed chain that kept chain lubricant from being flung on the rider's clothing, and the leg shield that similarly blocked road debris and hid the engine, and the convenience of the semi-automatic transmission.





**Honda Cub NBC 110cc as used by NZ Post**

In 1980 a CT110 version was produced which featured a 4 speed semi-automatic gearbox with a 2:1 ration gear reduction box, aimed at unsealed roads and light farm use. A version of this bike was adapted for Postal Services in New Zealand and Australian use in 1998 without the dual speed gearbox and with electronic 12v ignition. This became affectionately known as the 'Postie Bike' and are still seen on our streets today and even driven daily in anger by one of our more prominent members who shall remain anonymous, and we will simply nick name him Chris!

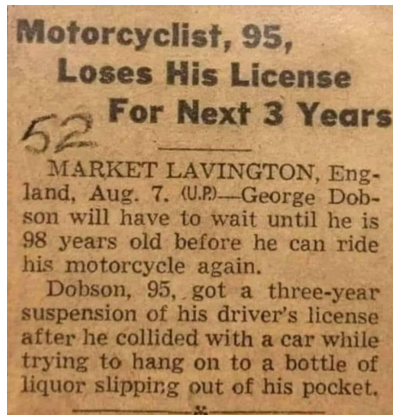
Other Variants of the Cub include C50, C65, C79, C90, C100, C110, C114 and C115 and C125.

The Honda Cub is still available new today in a 125cc format, be it at a price approaching \$7000.00



**2024 Honda Super Cub C 125**

	<b>C100</b>	<b>C125</b>
<b>Model years</b>	1958-1967	2018 - current
<b>Engine</b>	50cc OHV	125cc OHC
<b>Horse power</b>	4.5 @ 9500 rpm	9.1 @ 7500 rpm
<b>Top speed</b>	69km/h	110km/h
<b>Gearbox</b>	3 speed	4 speed
<b>Dry weight</b>	65kg	107kg
<b>Fuel capacity</b>	3 L	3.7 L



## OUR MEMBERS OUT AND ABOUT DECEMBER / JANUARY



### NOTICE OF AGM

Ulysses club of NZ Inc, Auckland branch

36<sup>th</sup> AGM agenda (FOR FINANCIAL YEAR 2024)

**Location:** The Manukau Cruising Club, Orpheus Drive, Onehunga, Auckland

**Date:** Wednesday 5th March 2025

**Time:** 7:00 pm

1. Welcome and Introductory Comments – Sheryl Boyd
2. Attendees and apologies - Sheryl
3. Minutes of 35th Branch AGM held on 3rd March 2024 – Sheryl
4. President's Report – Sheryl

- 5. Treasurer’s Report – Evan Swenson
- 6. Runs Co-ordinator Report – Chris Moller
- 7. Social Events Report – Peggy O’Neal
- 8. General business and remits - Sheryl
- 9. Election of Officers and Committee Members – Terry Brown  
(Nominations close 5<sup>th</sup> Feb 2025, nomination form follows)

President  
 Vice President  
 Treasurer  
 Secretary  
 Runs Co – Ordinator  
 Committee

10. 2025/2026 Presidents acceptance speech

11. Next (37th) Auckland Branch AGM date and time - President  
 Location: The Manukau Cruising Club, Orpheus Drive, Onehunga, Auckland  
 Date: .... March 2024  
 Time: 7:00pm

Note: All Apologies, Remits / items for General Business and Officers and Committee completed Nomination forms -  
 Please email to: [Auckland.sec@ulysses.org.nz](mailto:Auckland.sec@ulysses.org.nz)  
 or mail to Secretary, 6 Jackies Place Pukekohe Auckland.

[Nomination Form for Ulysses Club of NZ Incorporated](#)  
[Auckland Branch Committee Positions 2025/26](#)

Name: _____	Ulysses Number: _____
Position nominated for: _____	
Nominator: _____	Ulysses Number: _____
Seconded: _____	Ulysses Number: _____
Nominees Consent Signature: _____	
Date: _____	





DID YOU HEAR THERE'S BEEN A  
BIG CHANGE OVER AT ULYSSES?!

## OVER 18 & LIKE MOTORCYCLES? JOIN THE ULYSSES CLUB!

**With branches all over Aotearoa NZ, you are never far from other motorbike riders of all ages - no matter what brand you ride (or even if you don't ride).**

Our branches organise social events, group rides, fundraising events, training and more!

Join us and you'll see that there's lots to do and fun to have - for beginners and more experienced riders alike.

**To join, head to our website or email the Club administrator [admin@ulysses.org.nz](mailto:admin@ulysses.org.nz) and join over 2500 members who are out riding and having a great time!**

[www.ulysses.org.nz](http://www.ulysses.org.nz)



PHOTO: MANAWATU BRANCH

### ULYSSES CLUB MERCHANDISE

Show your club pride with some of our Ulysses branded merchandise. Decals, Patches, Clothing and Badges all available online.

Click this link to purchase online: [The Ulysses Club of NZ | Club Store](https://www.ulysses.org.nz/club-store)

### MEMBERS DISCOUNTS AVAILABLE

There have been changes to the Interislander and Bluebridge discounts.

[Click here for the new details.](#)

Re the Interislander please note if you are a senior tick the seniors box and enter the discount code. You will get discount on the seniors price. Also the Interislander on occasions has discount promotions.

There is currently one for twenty percent but subject to conditions. [Click here for details.](#) Note you cannot use two discount codes at the same time.

KIWI FUEL LTD current Ulysses card 0800 438383 or [info@kiwifuelcards.co.nz](mailto:info@kiwifuelcards.co.nz)

Motorcycle Doctors 10% discount for Ulysses members to use at the online store [www.shop.motorcycle-doctors.co.nz](http://www.shop.motorcycle-doctors.co.nz). Enter "Ulysses" as the discount code at checkout.

For further discounts click on the link above

### Are you a financial member?

There are still some people who have not renewed their membership yet. If you think this might be you please go and get out your Membership Card.

- Check the expiry date. If your membership expired last year, it is still not too late to renew your membership.
- Go online now and pay your sub.

One Year Individual Member is \$70.00,  
 Three Years Individual Member is \$190.00  
 One Year Joint Member is \$66.00 per each member  
 Three Years Joint Member is \$180.00 per each member.

Pay money into:

BNZ Bank A/c: 02-0412-0001771-097.

**DON'T FORGET TO INCLUDE YOU NAME AND ULYSSES # IN THE DETAILS**

Job done thanks.

### **RUNS AND SOCIAL EVENTS CALENDAR**

When attending a Club Ride be at the departure point 10 Minutes early with a FULL GASTANK and an EMPTY BLADDER. If you are not sure if the run may be cancelled because of inclement weather, phone the RIC.

#### RIDE GUIDE

SHORT:150Km's, MEDIUM: 150 - 300Km's, LONG: 300+Km's. XTRA/LONG:500+Km's  
 Each RIC will carry a Mobile Phone for emergencies. In an emergency use the number listed next to the relevant RIC. If no answer leave a message.

- The Rider in Charge will be organising the day. Contact them for details. All Riders participating in a Ulysses Club Ride are expected to hold a current licence, relevant to the motorcycle that they are riding, wear suitable clothing and have a registered and warranted road-worthy motorcycle.
- Club & Social Night Venues are printed at the bottom of the Runs List. Direct ride related questions to Chris Moller (Runs Co-ordinator) 09 298 1702 or RIC of the day. General questions to Sheryl Boyd (President) 021 675 328 .

Tue- 4th Feb

TUESDAY EASY RIDERS

Pick your R.I.C.and Destination on the day.  
 For more info contact Dave Tantrum 021 901 274  
 Departs Papakura Service Centre 10-00am

Wed- 5th Feb

CLUB NIGHT, CRUISING CLUB

Sat- 8th Feb

LITTLES NEWBIES & OLDIES

SHORT

Nathan is RIC - Phone or 0274 633442 Anyone  
 Departs Papakura Service Centre 10-00am

Sun- 9th Feb

NORTH WAIKATO WITH ROCKY

MEDIUM

Rocky is RIC - Phone 021 204 8159 or 021 204 8159 Anyone  
 Departs Bombay Z 10-00am

Tue- 11th Feb

TUESDAY EASY RIDERS

Pick your R.I.C.and Destination on the day.  
 For more info contact Dave Tantrum 021 901 274  
 Departs Papakura Service Centre 10-00am

Thu- 13th Feb

WEST AUCKLAND DINNER & SOCIAL NIGHT

- Sat- 15th Feb**                    **COFFEE, CAKES AND CONVERSATION - EAST**  
 Back to Lime Tree Café  
 Meet at 10:00am for a coffee and chat, choose your own departure time.  
 Lime Tree Café. Whitford
- Tue- 18th Feb**                    **TUESDAY EASY RIDERS**  
 Pick your R.I.C.and Destination on the day.  
 For more info contact Dave Tantrum 021 901 274  
 Departs Papakura Service Centre 10-00am
- Sat- 22nd Feb**                    **LITTLES NEWBIES & OLDIES**                    *SHORT*  
 Nathan is RIC - Phone or 0274633442                    Anyone  
 Departs Papakura Service Centre 10-00am
- Sun- 23rd Feb**                    **WAIHI WITH VANCE**                    *MEDIUM*  
 Vance is RIC - Phone 09 278 7229 or 021 023 83498                    Anyone  
 Departs Bombay Z 10-00am
- Tue- 25th Feb**                    **TUESDAY EASY RIDERS**  
 Pick your R.I.C.and Destination on the day.  
 For more info contact Dave Tantrum 021 901 274  
 Departs Papakura Service Centre 10-00am
- Thu- 27th Feb**                    **SOUTH AUCKLAND DINNER & SOCIAL NIGHT**  
 Papakura Club,5 Croskery Rd,off Hunua Rd.  
 Contact Chris 09 2891702 or 021 0347996.
- Tue- 4th Mar**                    **TUESDAY EASY RIDERS**  
 Pick your R.I.C.and Destination on the day.  
 For more info contact Dave Tantrum 021 901 274  
 Departs Papakura Service Centre 10-00am
- Wed- 5th Mar**                    **CLUB NIGHT, CRUISING CLUB. AGM NIGHT.**
- Sat- 8th Mar**                    **LITTLES NEWBIES & OLDIES**                    *SHORT*  
 Nathan is RIC - Phone or 0274633442                    Anyone  
 Departs Papakura Service Centre 10-00am
- Sun- 9th Mar**                    **FISH AND CHIPS WITH CHRIS**                    *Anyone*  
 Chris is RIC - Phone 021 034 7996 or 021 034 7996                    Anyone  
 Departs Bombay Z 10-00am
- Tue- 11th Mar**                    **TUESDAY EASY RIDERS**  
 Pick your R.I.C.and Destination on the day.  
 For more info contact Dave Tantrum 021 901 274  
 Departs Papakura Service Centre 10-00am
- Thu- 13th Mar**                    **WEST AUCKLAND DINNER & SOCIAL NIGHT**
- Sat- 15th Mar**                    **COFFEE, CAKES AND CONVERSATION - SOUTH**  
 KARAKA GENERAL STORE & CAFÉ. 257 LINWOOD ROAD  
 KARAKA.  
 Meet at 10:00am for a coffee and chat, choose your own departure time.
- Tue- 18th Mar**                    **TUESDAY EASY RIDERS**  
 Pick your R.I.C.and Destination on the day.  
 For more info contact Dave Tantrum 021 901 274  
 Departs Papakura Service Centre 10-00am
- Sat- 22nd Mar**                    **LITTLES NEWBIES & OLDIES**                    *SHORT*  
 Nathan is RIC - Phone or 0274 633442                    Anyone  
 Departs Papakura Service Centre 10-00am
- Sun- 23rd Mar**                    **WHANGAMATA WITH DAVE POTTER**                    *MEDIUM*  
 Dave is RIC - Phone 021 148 6831 or 021-148-6831                    Anyone  
 Departs Bombay Z 10-00am
- Tue- 25th Mar**                    **TUESDAY EASY RIDERS**  
 Pick your R.I.C.and Destination on the day.  
 For more info contact Dave Tantrum 021 901 274  
 Departs Papakura Service Centre 10-00am
- Thu- 27th Mar**                    **SOUTH AUCKLAND DINNER & SOCIAL NIGHT**  
 Papakura Club,5 Croskery Rd,off Hunua Rd.  
 Contact Chris 09 2891702 or 021 0347996.
- Tue- 1st Apr**                    **TUESDAY EASY RIDERS**  
 Pick your R.I.C.and Destination on the day.



For more info contact Dave Tantrum 021 901 274  
 Departs Papakura Service Centre 10-00am

**Wed- 2nd Apr**

**CLUB NIGHT, CRUISING CLUB**

**CLUB NIGHT MEETING AND SOCIAL EVENING.** Starts at approx. 6-30pm. Dinner, Tea & Coffee is available at the venues, Name badges must be worn (\$1 fine for non-conformance..). Visitors Welcome.

Venue; Manukau Cruising Club. Orpheus Pl, Onehunga. 1st Wednesday of each month.

**WEST AUCKLAND SOCIAL EVENING;** Venue -New Lynn RSA. 2 Veronica St, New

**SOUTH AUCKLAND SOCIAL EVENING;** Venue - RSA Papakura, Elliott Street, Papakura

Committee Meetings are held at 7:00pm on the second Monday of each month at The Manukau Cruising Club, Orpheus Road, Onehunga

"After Match Function" means an organized group ride returning back to a venue.

Rally Entry Forms etc. are available on Club Nights.

**AUCKLAND ULYSSES POSTAL ADDRESS;  
 PO Box 96 219, Balmoral, AUCKLAND 1342.**

**drury motorcycle**  
**Performance centre**

09 294 7955  
 027 216 4357  
 257 Great South Road  
 Drury  
[www.drurymotorcycleperformancecentre.co.nz](http://www.drurymotorcycleperformancecentre.co.nz)  
 email: [drurymotorcycle@gmail.com](mailto:drurymotorcycle@gmail.com)

**Des James**  
 Motorcycle Technician  
 Maintenance Engineer

Logos: Facebook, PIRELLI, MICHELIN, AVON TYRES, BRIDGESTONE, DUNLOP, METZELER, Continental

### **THINGS CAN CHANGE BETWEEN NEWSLETTERS!**

#### **Check before departing on a club ride**

To keep up-to-date with Branch events, runs and news between newsletters visit our website for the latest information [www.ulyssesauckland.org.nz](http://www.ulyssesauckland.org.nz)

We also have a face book page.

Join the [Auckland Ulysses Facebook](#) page. You will find notices of upcoming events, ride reports immediately after (or during!) rides, ride cancellations, and much more.

### **JUST A REMINDER - RAFFLE DONATIONS**

It's not just the committee's job find to find the raffle prizes at the monthly meetings - it's up to all members. The raffles (and the modest run fees) form a vital part of our Branch's income.

- Idea 1: if it's **your birthday** in a particular month please donate a bottle of wine or something else of similar value.
- Idea 2: consider donating any unwanted Christmas - or birthday - gifts as a raffle prize. That way it will still bring joy to someone.

- A BIG THANK YOU TO ALL THOSE WHO HAVE BEEN HELPING OUT WITH THE RAFFLES!

**BUSINESSES WHO SUPPORT AUCKLAND ULYSSES**

**ULYSSES MEMBERS' DISCOUNT**

There are a range of businesses throughout New Zealand that recognise the value of the Ulysses Membership. Note that to obtain the discount you will need to produce your current club membership card.

**CLUB DISCOUNTS 2024**

1. Interislander and 2. BLUEBRIDGE [Click Here](#)
3. VTNZ current Ulysses card 31 Dec 2024
4. KIWI FUEL LTD current Ulysses card 0800 438383 or [info@kiwifuelcards.co.nz](mailto:info@kiwifuelcards.co.nz)
5. KIWI MOTORCYCLES current Ulysses card Christchurch
6. APEX AUTO CENTRE HAM current Ulysses card
7. TREVOR PIERCE YAMAHA CHCH current Ulysses card
8. BUTT BUFFER WHANGANUI current Ulysses card
9. EZIBED NZ "ULY10" current Ulysses card
10. FRANKTON LAW current Ulysses card
11. ASURE ACCOMM GROUP Join Azure Group
12. TOP TEN MOTOR CAMPS Join Top Ten Group

**MEMBERS' FREE ADS**

<p><b>QUARTERSAWN Custom Wood Creations</b>          We are experienced craftsman that will create your custom piece to your requirements. Furniture, cabinetry, library, doors any wood project.          For examples click on <a href="#">quartersawn</a>          Phone Aaron <b>027 228 9724</b>          email <a href="mailto:aaron@quartersawn.co.nz">aaron@quartersawn.co.nz</a>          Paul B #8082</p>	<p><i>These adverts are for Ulysses Auckland members only and are free of charge. Email the Editor. Support your fellow members.</i></p>

**BUSINESSES WE LIKE**

**LIFESTYLE IMPORTS:** For all your motorcycle gear and clothing. Shop online at [www.lifestyle-imports.co.nz](http://www.lifestyle-imports.co.nz) They have now set up shop at 13 Queen Street Waiuku. Call Florence at 027 262 5287 for opening hours.

**CAFES:**

**Waiomu Beach Cafe** - 622 Thames Coast Road. Great coffee and food. Good parking just across the road.

**Native Tree Cafe** - 7 Church St, Mangatarata (on SH27 about 200 meters south of intersection with SH2). Great food & coffee. Sheltered outdoor seating. Excellent parking off main highway.

**Coach Cafe & Takeaways** - 37 Seddon Street, Raetihi An excellent stop in the central North Island.

**CLUBS:**

**Manukau Cruising Club** offer memberships to Over 65's for \$6 and \$30 per year for everyone else. A great opportunity to have a spot for a few drinks with friends or to join in with their great entertainments!


**Parnell Returned Services Club** - 139 Parnell Road, Parnell

We welcome anyone from Ulysses to pop in and enjoy a beer at a reasonable price.

We don't have pokies or TAB – but we do have pool tables, dart boards, and a juke box. We are surrounded by some of the best eating places in Auckland including pizza at La Porchetta, local Indian etc - bring the takeaways back to the club - they are virtually next door.

Guests will need to sign the visitors' book, but please consider membership at \$30 per calendar year. (This will give reciprocal rights with clubs all over NZ: see <https://clubsnz.org.nz/> ) There is a bike parking space across the road next door to the Windsor. Generally we are open 2pm to at least 9pm daily.

*Please send details of any businesses that treat Ulysses members well to the editor for future inclusion in this list.*



**ULYSSES**  
AUCKLAND BRANCH

**Join other Motorcycle Enthusiasts.  
Enjoy riding our country roads.  
Socialize over lunch at many great cafes**

**\* Several rides every month \* Rallies  
\* Weekends away \* Dinners and Social Events**

For more information go to our website:  
[www. ulyssesauckland.org.nz](http://www.ulyssesauckland.org.nz)

**AUCKLAND BRANCH OFFICERS & COMMITTEE**

**Office holders**

President	Sheryl Boyd	#9443 021675328	<a href="mailto:auckland@ulysses.org.nz">auckland@ulysses.org.nz</a>
Treasurer	Evan Swenson	#803 027 2370860	<a href="mailto:ewswb@xtra.co.nz">ewswb@xtra.co.nz</a>
Secretary	Roger Judd	#9372 021 844040	<a href="mailto:auckland.sec@ulysses.org.nz">auckland.sec@ulysses.org.nz</a>

**Committee members**

Chris Moller	#5401	0210347996	<a href="mailto:mollerz@xtra.co.nz">mollerz@xtra.co.nz</a>
Peggy O'Neal	#2849	021523976	<a href="mailto:peggyulysses@hotmail.co.nz">peggyulysses@hotmail.co.nz</a>



Doug Biene	#8665	027 8741912	<a href="mailto:dbene41@gmail.com">dbene41@gmail.com</a>
Mark Benton	#8668	027 836 166	<a href="mailto:mark_roch@hotmail.com">mark_roch@hotmail.com</a>
Janny Nicoll	#9471	021 070 0994	<a href="mailto:jannynicoll@gmail.com">jannynicoll@gmail.com</a>

**Other roles**

Runs Coordinator	Chris Moller	0210347996	#5401	<a href="mailto:mollerz@xtra.co.nz">mollerz@xtra.co.nz</a>
Sheriff	Clive Thomas	0274812700	#2383	<a href="mailto:clv6pat@gmail.com">clv6pat@gmail.com</a>
Webmaster	Charlie Truell	0223459309	#8956	<a href="mailto:charlietruell@gmail.com">charlietruell@gmail.com</a>
Newsletter Editor	Roger Judd	021 844040	#9372	<a href="mailto:ulyakld.editor@gmail.com">ulyakld.editor@gmail.com</a>
Facebook Admin	Adrienne Dodge	0211655349	#9247	<a href="mailto:ajdodge@xtra.co.nz">ajdodge@xtra.co.nz</a>

**ABOUT THE NEWSLETTER**

The newsletter is freely available to any non-members who wishes to subscribe. Members receive it automatically. Feel free to forward this on to anyone who may be interested. To subscribe email the editor.

The newsletter is distributed by email on or about the Saturday prior to the monthly meeting. Eleven monthly issues are produced, January being the missing month.

**If a printed copy is required the annual subscription will be \$30.** Printed newsletter is available for pick-up at the monthly social night at the Manukau Cruising Club. Copies not picked up by hand may be mailed out.

The editor encourages right of reply, correspondence, criticism, and suggestions.  
Address newsletter correspondence to: The Editor: [ulyakld.editor@gmail.com](mailto:ulyakld.editor@gmail.com)

**AUCKLAND ULYSSES POSTAL ADDRESS;**  
PO Box 96219, Dominion Road,  
AUCKLAND 1446.  
Web site: [www.ulyssesauckland.org.nz](http://www.ulyssesauckland.org.nz)